



A New “Lens” – Exploring New Tools for Research Impact Reporting

Emily Hart (she/her)
Science Librarian & Research Impact Lead

Stephanie JH McReynolds (she/her)
Librarian for Business, Management, and
Entrepreneurship; Research Impact Team Member

June 8, 2023



Land Acknowledgement

We would like to acknowledge with respect the Onondaga Nation, firekeepers of the Haudenosaunee, the indigenous peoples on whose ancestral lands Syracuse University now stands.

SUL Research Impact Team



Emily Hart

Science Librarian /Arts & Sciences
Biology, Chemistry,
Communication Sciences and
Disorders, Forensic Sciences,
Mathematics, Neuroscience,
Physics and Astronomy,
Psychology



Brenna Helmstutler

iSchool Librarian
Data Science & Analytics, Information
Management & Technology, Library &
Information Studies



Anita Kuiken

Falk College of Sport & Human
Dynamics Librarian
Exercise Science, Food Studies,
Human Development & Family
Science, Marriage & Family
Therapy, Nutrition Science &
Dietetics, Public Health, Social
Work, Sport Management, Aging
Studies Institute



Steph McReynolds

Business Librarian / Whitman School of
Management and Blackstone LaunchPad
Business, Management, & Entrepreneurship

Presentation at a Glance

- Where Lens Fits
- Database “Champions” Model for Liaison Outreach
- Overview of Lens
- Lens Institutional Toolkit
 - Saved Queries, Collections, Dashboards
 - Benefits and Limitations
 - Sample Lens Report

Where Lens Fits

Scopus

- Strong coverage in STEM
- Covers primarily journal literature and conference proceedings
- Article, journal, & author metrics

Web of Science

- Strong coverage in STEM & coverage of humanities & social sciences, but not arts & creative works
- Covers journal literature and some books
- Article, journal, & author metrics

Academic Analytics

- Strength is awards data
- Reporting tool only
- Custom reports available by request, lacks transparency
- Likely losing access to this tool

Experts@Syracuse

- RIM system powered by Pure
- Faculty profiles & scholarly and creative works fed primarily by Scopus
- Metrics & custom reporting

Dimensions

- Strong coverage of journal literature plus policy docs, grants, patents, and more.
- Auto-generated analysis and visualizations
- Custom groups
- Auto tagging of grants, publications, and authors

Lens

- Good coverage of journal literature and citations
- Unique coverage of patents
- Institutional Toolkit includes story-like reports, dashboards & visualizations



Brenna
Experts@Syracuse
Dimensions



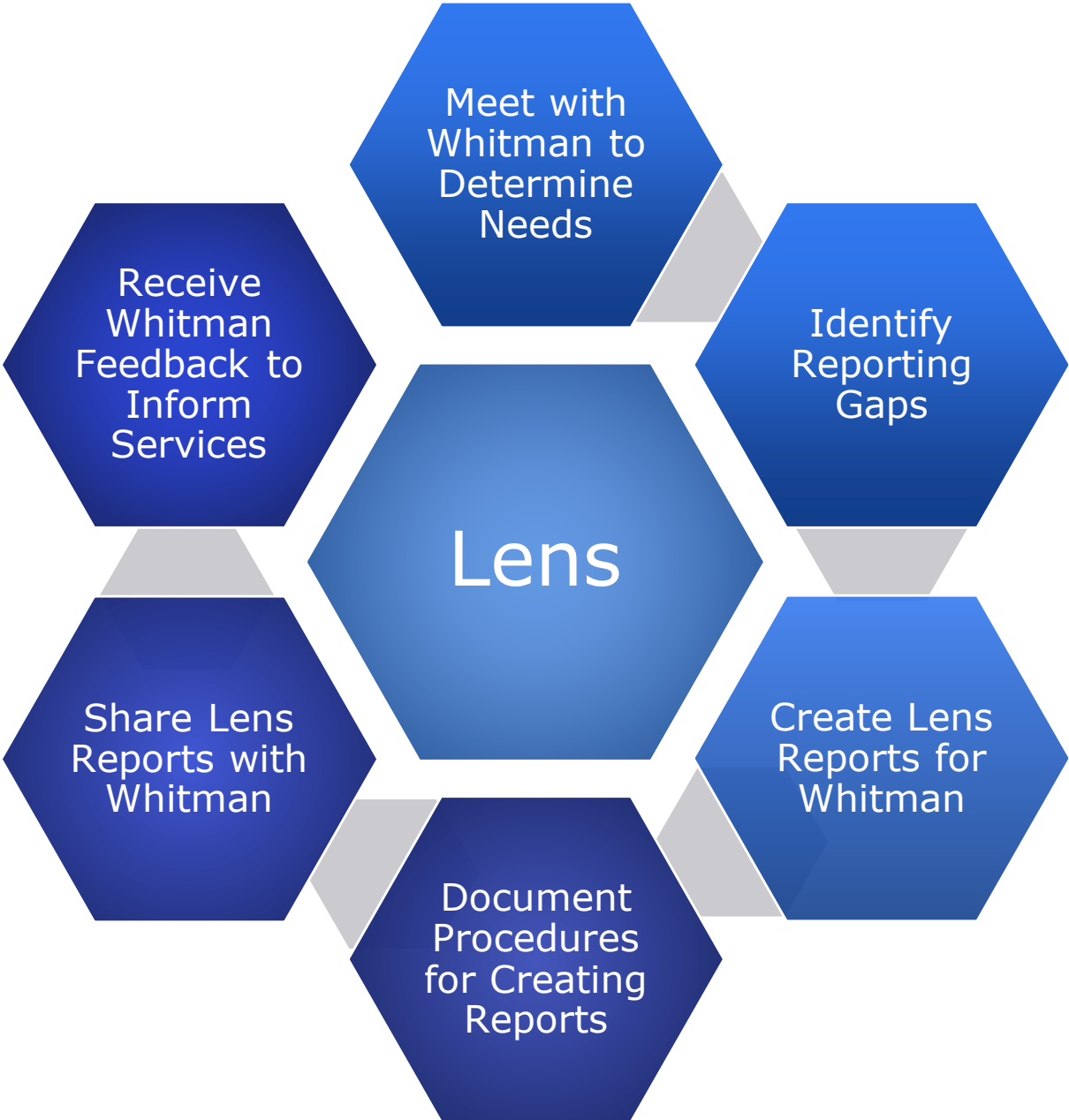
Anita
Experts@Syracuse



Steph
Lens

Database “Champions”

Liaison Outreach Plan for Lens

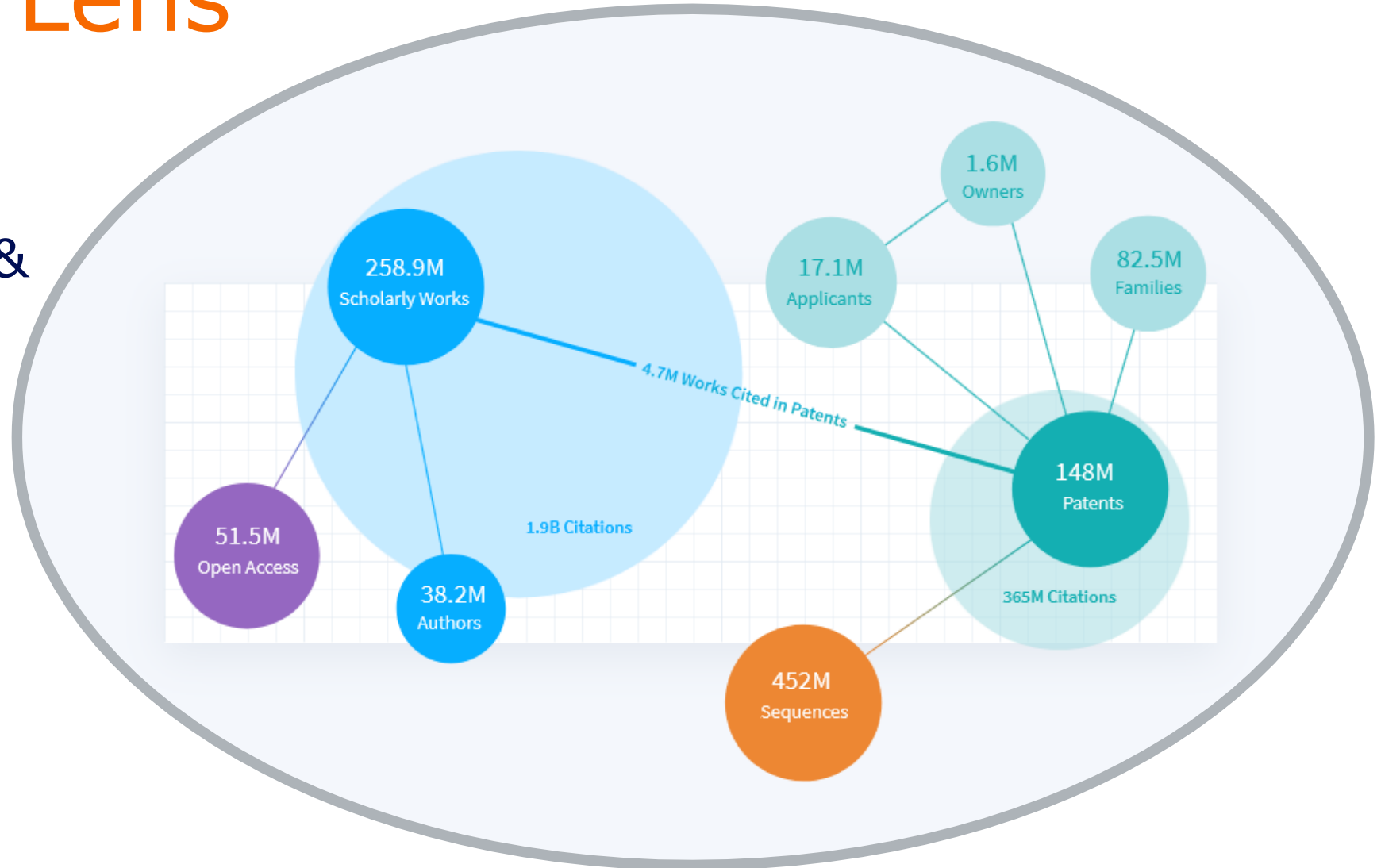


Overview of Lens

Freely available database of scholarly literature & patents at [Lens.org](https://www.lens.org)

- Includes apps/tools:

- [Scholarly Works](#)
- [Patents](#), [PatCite](#), & [PatSeq](#)
- [Lens Profiles](#)



Cambia. (2023). *The Special Sauce: Aggregated Metadata*. [Online image]. Retrieved from <https://www.lens.org/>

Lens Data Sources

Scholarly Works:

- [CORE](#)
- [CrossRef](#)
- [Microsoft Academic](#)
- [PubMed](#)
- [OpenAlex](#)
- [Unpaywall](#)
- [ORCID](#)

Patents:

- [European Patent Office \(EPO\)](#)
- [IP Australia](#)
- [United States Patent and Trademark Office \(USPTO\)](#)
- [World Intellectual Property Organization \(WIPO\)](#)

Scholarly Works

Hide Query Details
Edit Search
Search Patents

Syracuse University

354 SCHOLARLY WORKS

Follow

Scholarly Works (354) = entrepreneurship

Filters: Institution Name = (Syracuse University)

Scholarly Works
354

Works Cited by Patents
0

Citing Patents
0

Patent Citations
0

Works Cited by Scholarly
273

Scholarly Citations
22,039

Scholarly Works
Explore Citations New
Table
List
Analysis

+ Add New Chart
+ New Dashboard
+ Open Dashboard
+ Save Dashboard
+ Share Dashboard
+ Single Column
+ Presentation Mode
Help
Clear All

Changes to visualisations here will be reset at the end of your browser session.
Dashboards can be saved at any time and retrieved from your Work Area. Please also note counts may be approximate. [Learn More](#)

Most Active Authors

Author	Count
Johan Wiklund	354
Alexander McKelvie	34
Dean A Shepherd	21
Michael H Morris	17
J Michael Haynie	13
Minet Schindehutte	9
G T Lumpkin	8
Maria Minniti	7
Peter Koveos	7
Alejandro Amezcua	7
Karl Wennberg	7
David S Lucas	7

Top Fields of Study

Field of Study	Count
New Ventures	23
Sample (statistics)	19
Empirical research	20
Entrepreneurial orientation	13
Strategic management	13
Economic geography	13
Management	16
Demographic economics	15
Public economics	10
Resource (project management)	10
Market economy	10
Work (electrical)	10
Value (ethics)	8
Business failure	8
Family business	7
State (polity)	8
Venture capital	6
Affect (psychology)	8
Well-being	7
Impulsivity	7
Accounting	4
Variety (cybernetics)	6
Economic inequality	5
Mental health	6
Corporate governance	6
Metacognition	6
Developing country	5
Public administration	7
Development theory	5
Microeconomics	7
Scholarship	8
Engineering ethics	8
Epistemology	9
Commercialization	6
Business model	8
Market economy	10
Population	6
Self-employment	8
Economic geography	13
Entrepreneurial orientation	13
Sample (statistics)	19
Perspective (graphical)	9
Empirical research	20
Perception	6

Clear
Refine

- 📍 Institution Country/Region
- 🏷️ Identifier Type
- 💰 Funding
- 📖 Journal
- 🏛️ Conference Name
- 📄 Publication Type

Scholarly Works: Citing Patents

The screenshot displays the Syracuse University Scholarly Works interface. At the top, the university logo and name are shown with '2,119 SCHOLARLY WORKS'. Navigation options include 'Hide Query Details', 'Edit Search', and 'Search Patents'. A 'Follow' button is also present.

The main section shows 'Scholarly Works (2,119) = All Docs'. Filters are set to 'Institution Name = (Syracuse University)' and 'Cited By Patent'. A breadcrumb trail shows 'Scholarly Works (2,119) > Works Cited by Patents (2,119) > Citing Patents (7,646)'. Below this, a secondary breadcrumb trail shows 'Scholarly Works > Explore Citations > Citing Patents (7,626) = All Docs'. The 'Citing Patents' section has 'No filters applied' and a secondary breadcrumb trail: 'Patent Records (7,626) > Simple Families (5,041) > Extended Families (4,420) > Cites Patents (7,312)'. The interface includes various action buttons like 'Expand', 'Customise List', 'Save as Query', 'Share', 'Export', 'Hide Analysis', and 'Date Published (newest)'.

The first entry is a journal article: 'Synthesis, Characterization, and Cellular Uptake of Magnesium Maltol and Ethyl...'. It is an open access article from ACS Omega, Volume 6, Issue 44, Pages: 29713-29723, Oct 28, 2021. Authors: Derek R Case, Ren Gonzalez, Jon Zubieta, Robert P Doyle. It has 1 citing patent, 0 citing scholarly works, and a reference count of 53. The DOI is 10.1021/acsomega.1c04104. Additional info includes Open Access, Patents, Abstract, Funding, Affiliation, and Field of Study.

The second entry is a patent: 'Conjugates of a factor VIII moiety having an oxime-containing linkage'. It is a granted patent (US 11628205 B2) from the Family: 7s / Tex, Family Jurisdictions: US, JP, KR, CN, WO, EP. Legal Status: Active. Application No: 201716319759. Filed: Jul 21, 2017. Published: Apr 18, 2023. Earliest Priority: Jul 22, 2016. Granted: Apr 18, 2023. Owners: Nektar Therapeutics. Applicants: Nektar Therapeutics. Inventors: Bossard Mary J, Sheng Dawei. Cited Works: 51. Cited by: 0. Cites: 15. DOI: 10.333-519-525-636-844. Additional info includes Active, Full text, Examiner, Owners, Abstract, Claim, Description, and Cited Works.

Patents

Information extraction system and method using concept relation concept (CRC) triples


US 6076088 A **Granted Patent** Family: 2s / 7ex Family Jurisdictions: US Legal Status: ● Expired
Application No: 79565897 Filed: Feb 6, 1997 Published: Jun 13, 2000 Earliest Priority: Feb 9, 1996 Granted: Jun 13, 2000
Owners: Textwise Llc
Applicants: Paik; Woojin , Liddy; Elizabeth D. , Liddy; Jennifer Heverin , Niles; Ian Harcourt , Allen; Eileen E.
Inventors: Paik Woojin , Liddy Elizabeth D , Liddy Jennifer Heverin , Niles Ian Harcourt , Allen Eileen E
Cited Works: 18 Cited by: 896 Cites: 6 Collections: 1 [043-162-722-455-042](#)

Additional Info: Expired Full text Examiner Owners Abstract Claim Description 66 Cited Works Published

Summary Full-text Family Info Legal Info **Citations** Collections

[Share Patent](#) [Search Family](#) [Add to Collection](#) [Download Citation](#)

Cites 18 Works **Cited by 896 Patents** Cites 6 Patents

 **US 6076088 A is cited by 896 patents**
You can load these citations as a new search. This will enable you to analyse, filter and ref

[View Results in Patent Search](#)

Patent Search Results

Patents (896) = **Cited Patent Lens Id: 043-162-722-455-042** ⊖

Filters: No filters applied

Patent Records 896	Simple Families 508	Extended Families 398	Cites Patents 896
------------------------------	-------------------------------	---------------------------------	-----------------------------

Patents **Explore Citations** New

[Expand](#) [Customise List](#) [Save as Query](#) [Share](#) [Export](#) [Family Options](#) [Hide Analysis](#) [Sort by Relevance](#)

System and method for speech to text translation using cores of a natural liquid architecture system

US 10621988 B2 **Granted Patent** Family: 2s / 271ex Family Jurisdictions: US Legal Status: ● Active
Application No: 201715589558 Filed: May 8, 2017 Published: Apr 14, 2020 Earliest Priority: Oct 26, 2005 Granted: Apr 14, 2020
Owners: Cortica Ltd
Applicants: Cortica Ltd
Inventors: Raichelgauz Igal , Odinaev Karina , Zeevi Yehoshua Y
Cited Works: 225 Cited by: 2 Cites: 494 Collections: 10 [007-343-864-062-823](#)

Additional Info: Active Full text Examiner Owners Abstract Claim Description 66 Cited Works Published

Lens Pricing Model

Syracuse University Libraries' subscription to the Institutional Toolkit helps to support free global access to Lens.org and aligns with the Libraries' commitment to support open access content and freely available tools.

The image displays a pricing model for Lens.org, organized into two main sections: Personal Account and Institutional Account.

PERSONAL ACCOUNT

- Open Public Access**: \$0. Individuals wanting to search and analyse patents, and scholarly works. [See More Details](#) [Start Searching](#)
- Professional Workspaces** (Total)
 - Non-Profit Use**: \$0 / Month. Individuals wanting to search, analyse and manage patents, scholarly works. [See More Details](#) [Register Account](#)
 - Commercial Use** (Popular): \$1,000 / Annum. Individual professionals in SMEs wanting Lens features or metadata in a commercial setting. [See More Details](#) [Login](#)

INSTITUTIONAL ACCOUNT

- Toolkits** (LEAP)
 - Non-Profit Institutional**: From \$0. Public-good institutions wanting to manage, markup, and promote knowledge assets. [See More Details](#) [Pricing](#)
 - Commercial Enterprise**: From \$5,000. Commercial institutions wanting to analyse, manage and markup knowledge assets. [See More Details](#) [Enquire](#)

Cambia. (2023). *Account Types: Professional Workspaces and Institutional Toolkits*. [Online image]. Retrieved from <https://www.lens.org/lens/accounts>

Lens Institutional Toolkit

What's included with your subscription to ITK?

- API
- Work Area
 - Saved Queries
 - Search History
 - Collections
 - Dashboards
 - Media Library
 - Beta Reports



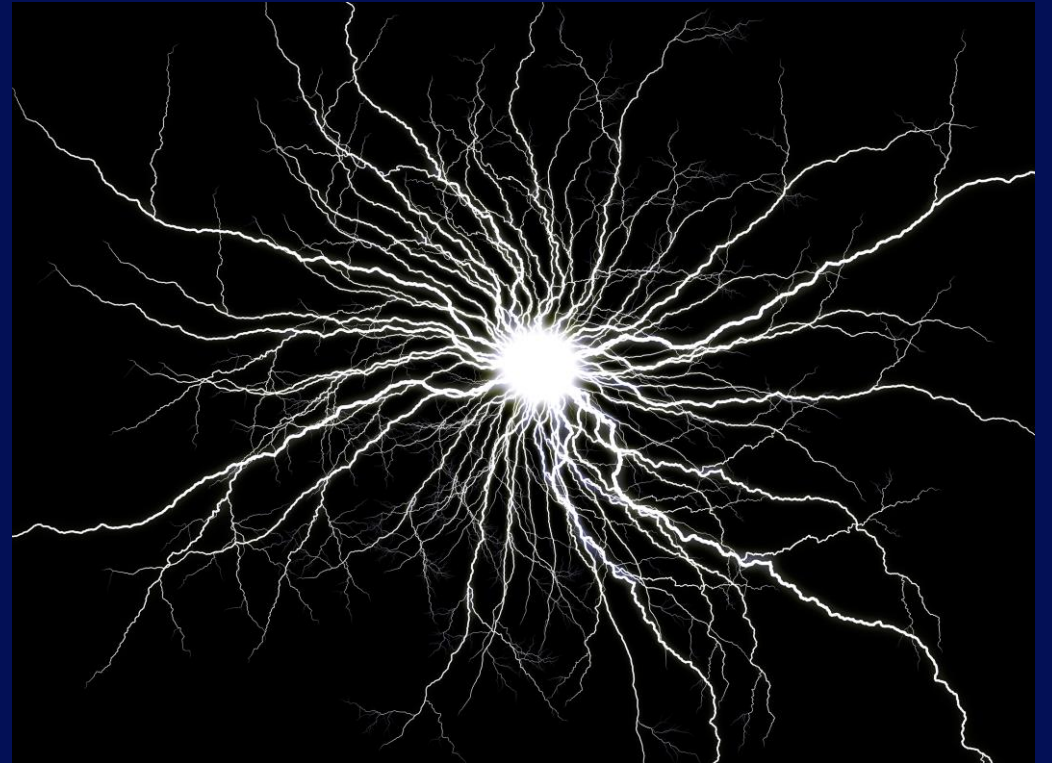
Saved Queries (Searches)

- Saved searches are used to populate collections, dashboards, and reports
- Saved queries update whenever new results are added to the Scholarly Works or Patents database



Dynamic Collections

- Linked to a saved query
- Updates automatically
- Can be customized by manually adding or removing items
- Static collections are also an option



Dashboards & Analysis

- Analysis of a scholarly works or patent search
- Can be made from a new query, saved query, or collection
- Variety of customizable, automated visualization options and data sets to choose from
- Presentation mode

Top Research Areas



[View as Lens result](#)

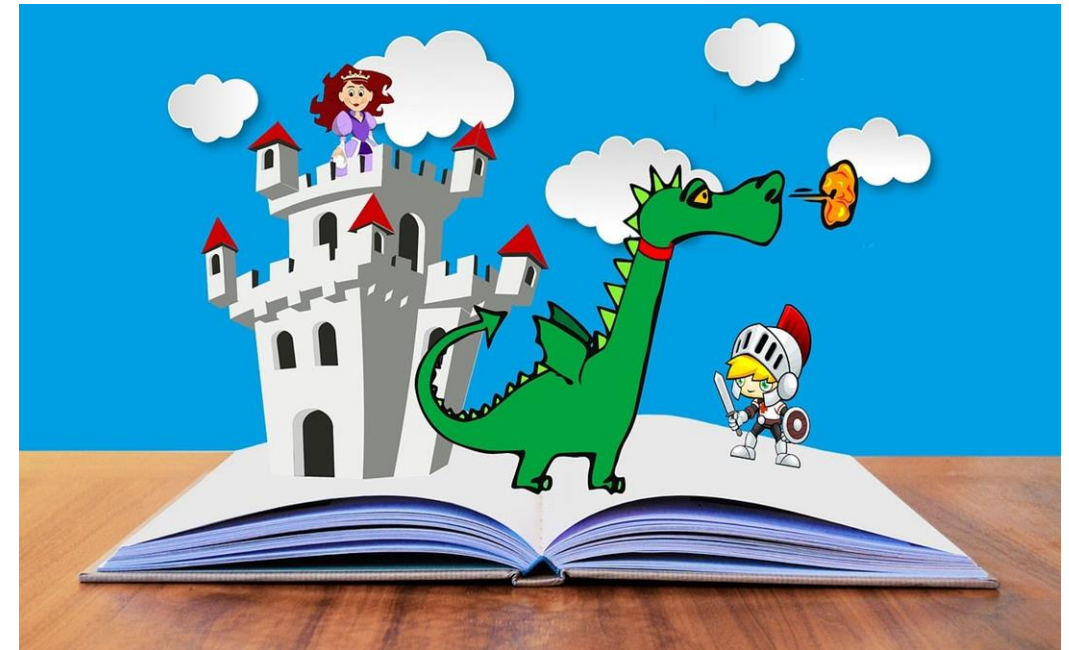


Sample Dashboard Visualization Options:

- Word Clouds
- Heat maps
- Line & bar graphs
- World Map
- & more

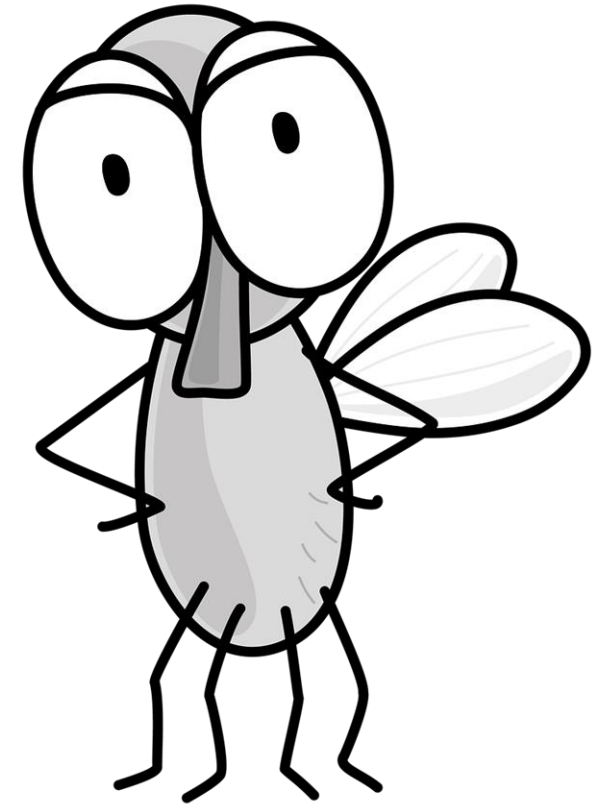
Benefits

- Not-for-profit company
- Helping improve their product and support a positive initiative
- Unique features (story-like, reports, sharing, real-time updates)
- Ideal for communicating with stakeholders, potential funders and industry partners



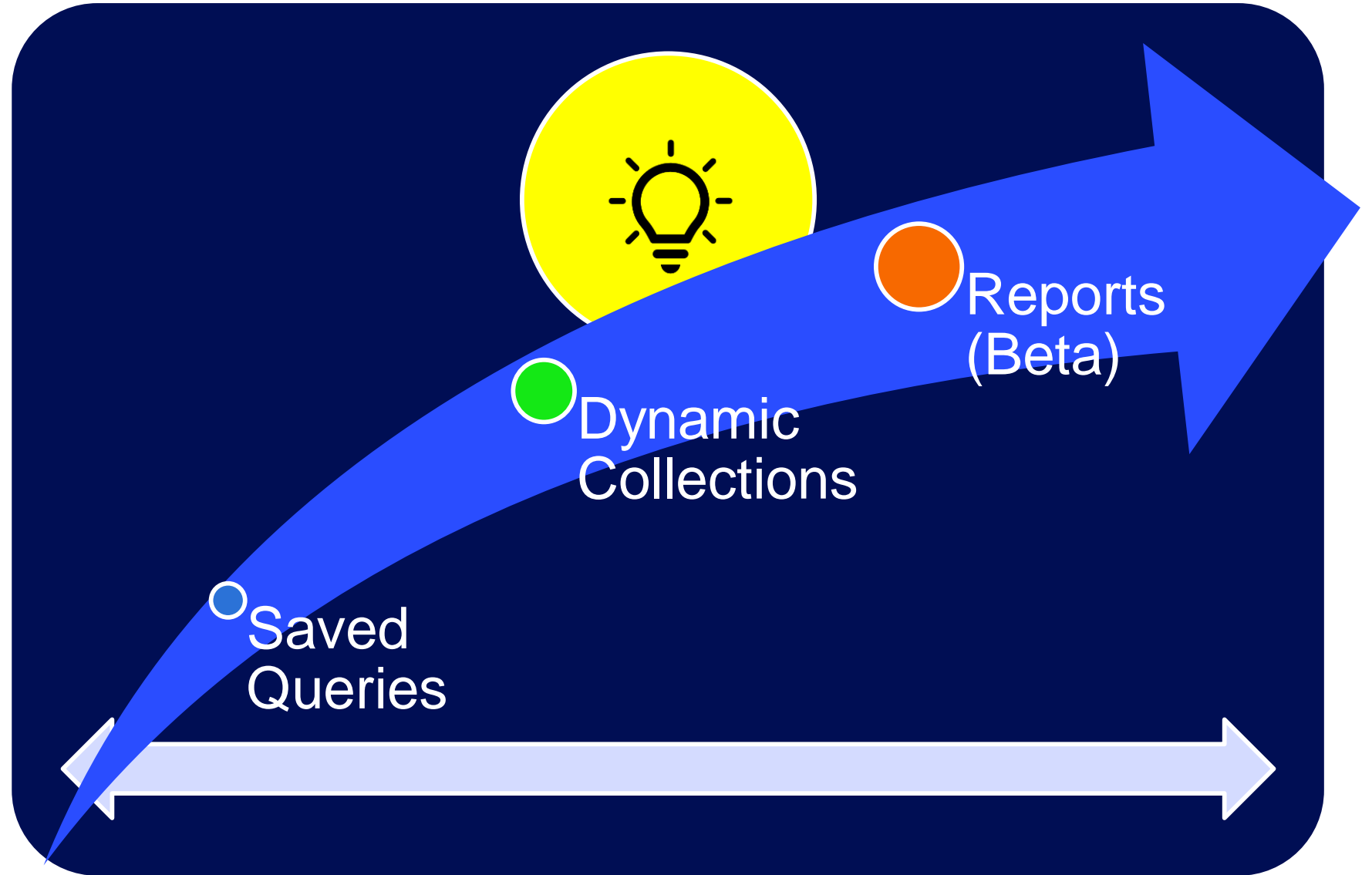
Limitations & Challenges

- Single user account
- Awkward searching (ScholarWorks)
- Strict groups problem
- Learning curve
- Company - not very responsive
- No branding
- Buggy
- Early adopter



Reports

Putting it all together to tell a story



Sample Lens Report

[Lens sample report](#) (public)

[Lens reporting](#) (backend)

Thank You!

Connect with the Research Impact Team
at riteam@syr.edu.

