

Building a Research Impact Team: Championing the Role of Liaison Librarians

Emily Hart, Science Librarian & Research Impact Lead

Brenna Helmstutler, iSchool Librarian

Anita Kuiken, Librarian for Falk College of Sport & Human Dynamics

Stephanie JH McReynolds, Librarian for Business, Management, and Entrepreneurship

riteam@syr.edu





Our Contributions to BRIC

Agenda:

- Libraries & University background
- Team origin story
- Team development
- What we're doing now
- Where we're headed

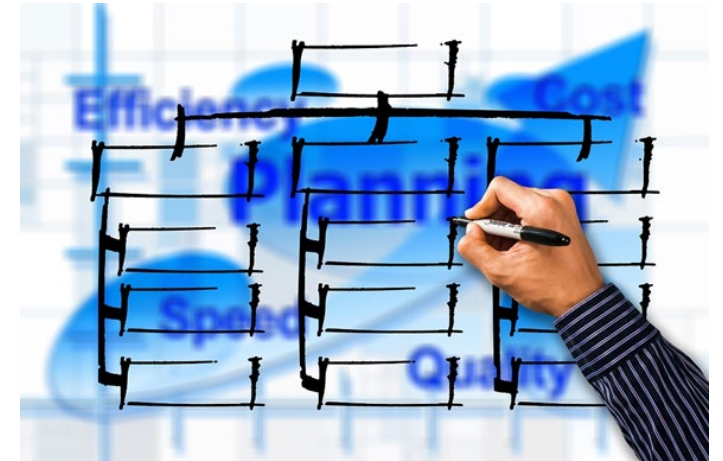
Target audience

- Getting started in research impact and bibliometrics work
- Launching new services
- Interested in forming a research impact/bibliometrics team
- Developing or furthering relationships with subject/liaison librarians



University/Libraries' Restructuring to Focus on Research

- Carnegie R1 designation in 2015
- Associate Deans for Research (ADRs) Leadership Group
- Initiatives to support & promote interdisciplinary research
- Office/division restructuring
- Office of Research – Proposal Support Services
- Internal grants
- Interdisciplinary research clusters





The Libraries' Response

Ad Hoc Services

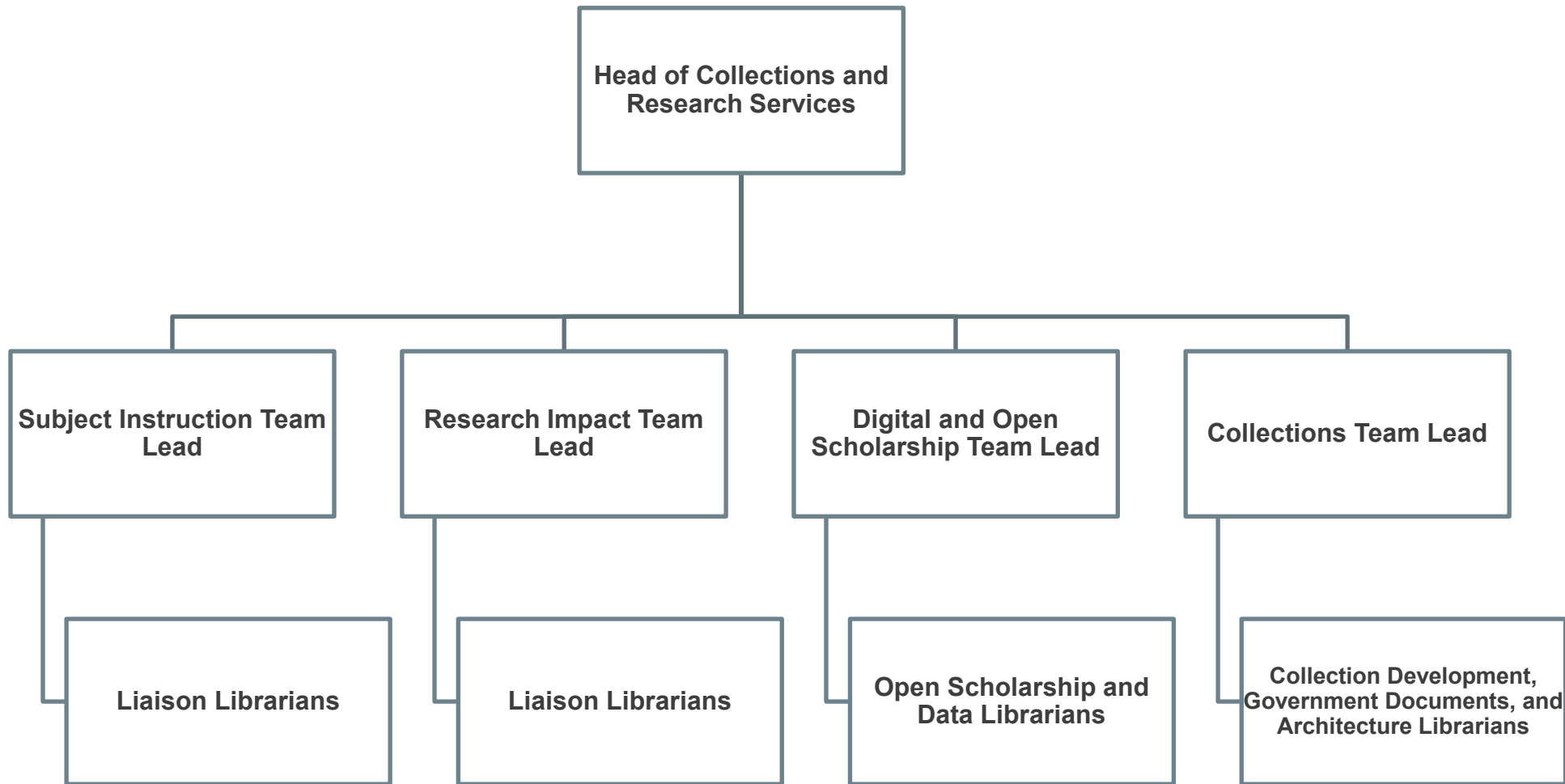
- Research Information Management (RIM) system, Experts@Syracuse (Est. 2016)
- Open access initiatives
- Institutional repository promotion
- Collaborative work with Office of Research & Proposal Support Services
- Use of research & metrics tools to support researchers and University rankings (Scopus, Web of Science, Journal Citations Reports, Pure)

Gradual move from ad hoc to holistic

- Libraries – Department of Research & Scholarship – Teams – Champions of initiatives
 - Digital & Open Scholarship Team
 - Research Impact Team



Department of Research and Scholarship





Research Impact Team

Overarching focus on supporting the University research enterprise at both the institutional and individual level.

- RIM System (Experts@Syracuse)
- Research Metrics Challenge
- Research impact related guides
- ORCID & other researcher profiles
- Funding discovery tools & outreach
- Systematic Reviews



Year 1 – Team & Vision Building

- Basics – weekly meetings & shared working spaces
- Individual & shared brainstorming activities to define what our team encompasses and who our constituents are
- Team professional development & skill building
- Development of a team mission statement
- Development of short and long-term goals
- Clifton Strengths Finder Workshop
- Defining services for different user groups
- Work with subject librarians
 - Base-level competencies
 - When to pass off to the Research Impact Team





Liaison Librarian Responsibilities

Assigned to work with students, faculty, and staff of academic departments in the areas of:

- Instruction
- Collection Development
- Research Consultations
- Outreach/Marketing & Engagement



Strengths as liaison librarians

- Varying research impact experience
- Collaboration
- Departmental (schools/colleges):
expertise, research needs, connections



Team Subject Areas of Responsibility

Emily Hart: Biology, Chemistry, Communication Sciences and Disorders, Forensic Sciences, Mathematics, Neuroscience, Physics and Astronomy, Psychology

Brenna Helmstutler: Library Science, Information Technology

Anita Kuiken: Exercise Science, Human Development and Family Science, Marriage and Family Therapy, Public Health, Social Work, Sport Management, Food Studies & Nutrition

Stephanie McReynolds: Business, Management, & Entrepreneurship



Interfacing with liaison librarian colleagues

- Workshops
- Research Metrics Challenge pilot
- Liaison librarian involvement in queries
- Research & Scholarship meetings



Interfacing with campus 1/2

Office of Research

- Institutional Research
- Research Development Group
- Proposal Support Services



Interfacing with Experts

- Libraries
 - graduate student employee
 - research guide on profile management
- Experts@Syracuse Initiatives
 - Organizing reporting knowledge base: clusters*, templates
 - Establishing the BioInspired Institute
 - Adding Experts API access for BioInspired faculty webpages
 - Creating Writing, Rhetoric, and Composition profiles

**Clusters are faculty hired at the same time, from multiple disciplines, to work on similar research initiatives*

Programming & Promotion

Knowledge development,
programming, outreach,
and promotion happened
simultaneously

Image by Kyle Klein Photography, Creative Commons License CC BY-ND 2.0 Location:
<https://www.flickr.com/photos/masstravel/30219959601>





Baseline Marketing strategy:

- Repackaged SUL's Research Metrics Challenge
- Research Services web page
- Social Media promotions
- Research Impact Team video



Educational Programming

- Research Metrics Challenge
- iScholars presentation
- [Learn AT SUL session](#)
- Funding Opportunities & Research Reputation presentations for STEM grad students & Post-docs
- Humanities focused research metrics, research profiles, and research reputation presentation for Language, Literature, & Linguistics Dept. & Arts & Sciences ADR (next week)



On the Horizon: New Research Guides

- Social Sciences & Humanities Research Metrics Guide
- Systematic Reviews Guide
- Finding Appropriate Journals for Publication Guide
- Finding Funding Opportunities & Awarded Grants Guide
- Responsible Research Assessment Guide



On the Horizon: New Reporting Services

Standardized and Custom Research Metrics Reports for:

- Clusters* and Institutes
- Departments and Schools/Colleges

Identifying Trends in Research Productivity & Collaboration
Across Campus

Comparative Benchmarking of SU & Peer Institutions

**Clusters are faculty hired at the same time, from multiple disciplines, to work on similar research initiatives.*



On the Horizon: Education & Outreach

- Recording Webinars/Tutorials
- Developing Standard Set of Customizable Presentations
- Creating Self-Paced Learning Opportunities
- Creating Team Brochure for New Faculty
- Making Connections & Having Conversations with Researchers and Departments About Their Needs



On the Horizon: Needs Assessment

- Faculty Focus Groups
- Interviews with Associate Deans for Research, Department Chairs, and Research Support Staff
- Understanding Tenure & Promotion Requirements, Process, and Timelines



Team Mission (Version 1)

The Research Impact Team is a group of librarians in Syracuse University Libraries' Department of Research and Scholarship, who work extensively with individuals during the creation, publication, and dissemination phases of research. The Team's activities are centered around understanding the impact of scholarly and creative works produced by researchers at the University and advocating for the responsible assessment and promotion of those works. To accomplish this, the Team collaborates with departments, colleges, institutes, and offices across campus to understand research trends and support research infrastructure, with a goal of continually improving the research reputation of the University.



Questions & Follow-up

Please reach out to us if you have follow-up questions or would like to connect with us!

Contact us at riteam@syr.edu

